

PARASITES OF WESTERN AUSTRALIA

XIV

TWO NEW SPECIES OF *OPHTHALMODEX*
LUKOSCHUS AND NUTTING (ACARINA: PROSTIGMATA:
DEMODICIDAE) FROM THE EYES OF BATS

A.G.W. WOELTJES* and F.S. LUKOSCHUS*

ABSTRACT

Two new species of *Ophthalmodex* Lukoschus and Nutting from bats are described from the Kimberley Division of Western Australia: *O. australiensis* from *Rhinonicteris aurantius* (Gray) (Hipposideridae) and *O. wilsoni* from *Eptesicus pumilus* (Gray) (Vespertilionidae).

INTRODUCTION

Species of *Ophthalmodex* Lukoschus and Nutting, 1979, tiny turtle-shaped mites of the family Demodicidae live on the corneal surface in the eyelid fornices and in the ducts of the lacrimary glands of mammals. They are morphologically adapted to these niches, where they consume epithelial cells. Only lightly infected hosts and low-grade pathology have been observed (Lukoschus and Nutting 1979, Lukoschus *et al.* 1980).

SYSTEMATICS

Key to Species of *Ophthalmodex*

Males

- 1 Opisthosoma strongly reduced, not prominent between legs IV, prodorsal shield with U or V-shaped elevation behind aedeagus 2
- Opisthosoma in form of U or V-shaped prominence behind legs IV, prodorsal shield with or without inverted V-shaped elevation, covering aedeagus 3
- 2 Aedeagus slender, shield elevation in V-shape, inverted U-shaped striations on posterior part of dorsum, *ex Artibeus literatus* ... *O. artibeii* Lukoschus and Nutting, 1979
- Aedeagus stout, shield elevation in U-shape, only few longitudinal striations on terminal region of dorsum, *ex Carollia perspicillata* *O. carolliae* Lukoschus *et al.*, 1980

* Department of Aquatic Ecology, Catholic University of Nijmegen, The Netherlands.

- 3 Claws with 6 points, *ex Molossus molossus* *O. molossi* Lukoschus
et al., 1980
 Claws with 5 points 4
- 4 Coxal fields II and III largely separated in midline,
 opisthosoma almost triangular, tapering to end, *ex*
Rhinonictoris aurantius *O. australiensis* sp. nov.
 Coxal fields II and III almost together in midline,
 opisthosoma with broad end, *ex Eptesicus pumilus* . . . *O. wilsoni* sp. nov.
- Females**
- 1 Genital opening between coxal fields IV 2
 Genital opening behind coxal fields IV 3
- 2 Opisthosoma a single U-shaped prominence. Dorsal
 shield covering anterior podosoma, *ex Artibeus literatus* *O. artibeii*
 Lukoschus *et al.*, 1980
 Opisthosomal contours laterally bisinous. Dorsal
 shield demarked anteriorly from anterior poclosoma
 by single striation, *ex Carollia perspicillata* *O. carolliae*
 Lukoschus, *et al.*, 1980
- 3 Claws with 6 points, *ex Molossus molossus* *O. molossi* Lukoschus
et al., 1980
 Claws with 5 points 4
- 4 Coxal fields II and III small, widely separated in mid-
 line, *ex Rhinonictoris aurantius* *O. australiensis* sp. nov.
 Coxal fields large trapezoid, close together in midline,
ex Eptesicus pumilus *O. wilsoni* sp. nov.

Ophthalmodex australiensis sp. nov.

Figs 1-5

Holotype

WAM 80-320; male; total length 125 μm , width 79 μm ; host: *Rhinonictoris aurantius* (Gray); Hipposideridae (deposited in the Field Museum of Natural History, Chicago [FMNH]); locality: Geikie Gorge, 18°05'S, 125°43'E; 9 October 1976; coll. F.S. Lukoschus.

Allotype

WAM 80-319; female; total length 140 μm , width 85 μm . Other data as for the holotype.

Paratypes

WAM 80-321 (1 slide). Other paratypes are in FMNH (3 slides) and the Catholic University of Nijmegen (CU) (3 slides). Other data as for the holotype.

Diagnosis

Elongate-oval species with the characteristics of the genus. Axes in both sexes 1.6: 1, opisthosoma a quarter of total length. Largest adult, a female, 148 x 73 μm .

Description

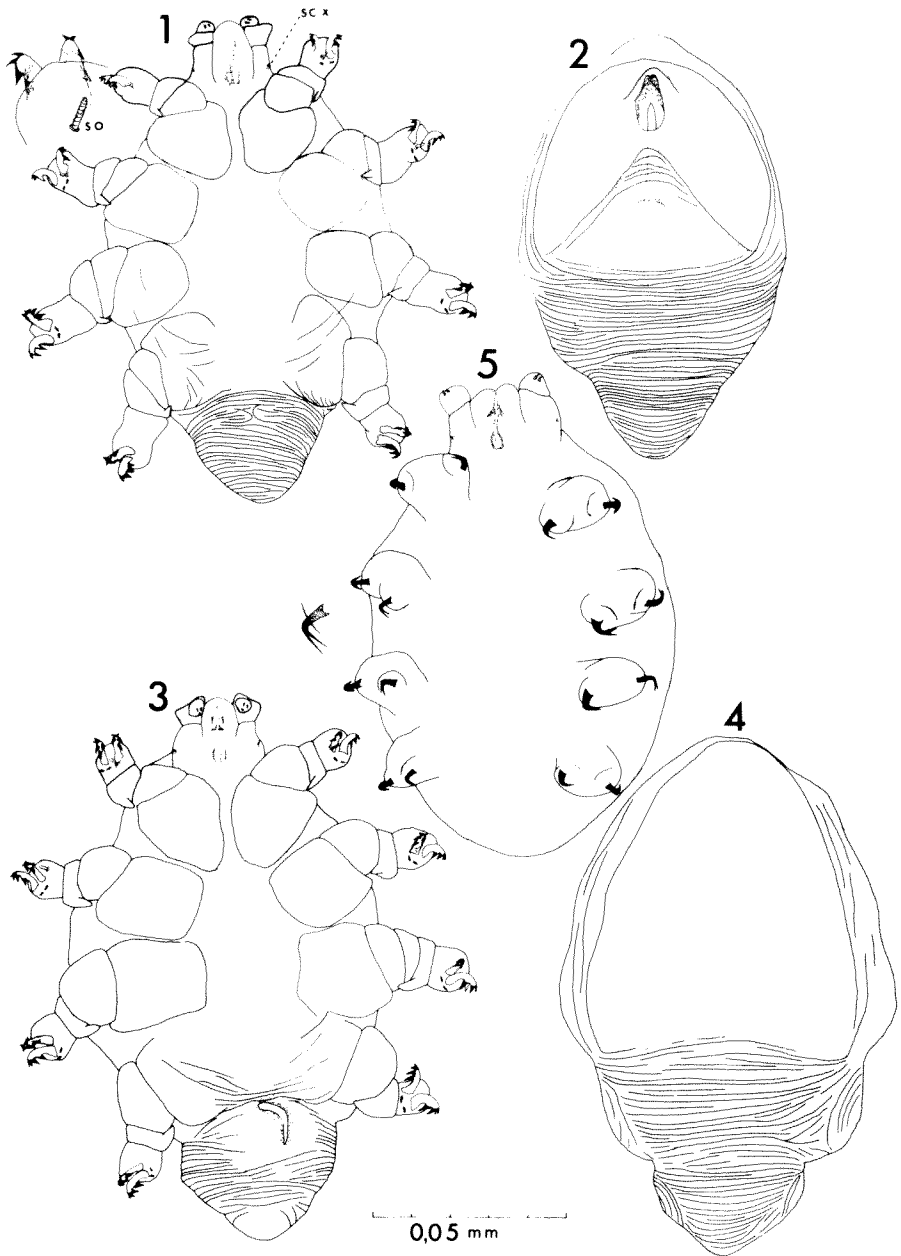
Male (Figs 1, 2): Venter (Fig. 1) elongate, with pronounced opisthosoma. Gnathosoma and legs partly covered by overhanging carapace-like dorsum. Legs short and broad with large coxal plates touching one on the next in file, but widely separated in midline (except legs I). Length of coxal fields about subequal to their width. Femora with prominent ventroposterior spurs not remarkably sclerotised. Genua-tarsi fused into apical segment with two large five-tined claws, two point-like internal sclerotisations, and on legs I-II one free solenidion (so). Shaft of claws moderately recurved, apical tines smaller than lateral ones. Gnathosoma with two-segmented palps and styliform chelicerae. Small palptarsus attached ventrally to broad palptibia with lateral and dorsoanterior conical expansions. Palptarsus with two two-pointed claw-like spines and one small solenidion. Pharyngeal bulb present, subgnathosomal setae absent. Supracoxal setae (scx) short in broad, relatively strongly sclerotised rings on dorsolateral side of gnathosomal base. Dorsum (Fig. 2): Prodorsal shield with triangular elevation, without sclerotised pattern or podosoma tubercles, 67 x 57 μm (holotype), covering most of width of podosoma. Large genital opening near anterior border of prodorsal shield. Aedeagus strong, 29 μm long (holotype), in penis sheath. Soft parts of metapodosoma transversely striated.

Female (Figs 3, 4): Total length in 10 paratypes measured 140.7 ± 4.8 , width 85.1 ± 5.8 . General shape of venter, legs and gnathosoma as in male, but palptibia with stronger dorsoanterior cone, and broader opisthosoma with tapering rounded end (33 μm long [allotype], in paratypes 34.3 ± 2.0). Total length/length opisthosoma 4.11 ± 0.12 . Genital opening behind coxal plates IV. Dorsum with large prodorsal shield 67 μm long (allotype), paratypes 70.1 ± 7.3 , almost wholly covering region of legs I-III. Soft parts to sides of shield with few longitudinal striae, behind shield with largely transverse striae.

Nymph (Fig. 5): Oval, with soft, smooth cuticle. Gnathosoma head-like as large as in adults, with palps, carrying two spines. Legs stubby, unsegmented, with two lobes, but without ventral segmentation line as in *Demodex*. Leg lobes each with one two-pointed claw with slender tines. Solenidia not observed. Ventral scutes and other anchoring organs absent.

Egg: With thin unsculptured shell, large in relation to female and genital opening: $61.1 \pm 2.4 \mu\text{m}$. As in all other demodicid and psorergatid genera egg-shell not observable within females mounted in Hoyer's medium.

TWO NEW OPTHALMODEX FROM BATS



Figs 1-5: *Ophthalmodex australiensis* sp. nov. (1) male holotype, venter; (2) male holotype, dorsum; (3) female allotype, venter; (4) female allotype dorsum; (5) nymph, venter.

Ophthalmodex wilsoni sp. nov.

Figs 6-9

Holotype

WAM 80-316; female; total length 148 μ m, width 93 μ m; host: *Eptesicus pumulis* (Gray): Vespertilionidae (deposited in FMNH); locality Geikie Gorge, 18°05'S, 125°43'E; 9 October 1976; coll. F.S. Lukoschus.

Allotype

WAM 80-317; male, total length 128 μ m, width 93 μ m. Other data as for the holotype.

Paratypes

WAM 80-318 (1 slide). Other paratypes are in FMNH (4 slides) and CU (3 slides). Other data as for holotype.

Diagnosis

With characteristics of the genus and closely related to *O. australiensis*. Largest adult, a female 157 x 102 μ m. Opisthosoma less than a quarter of total length.

Description

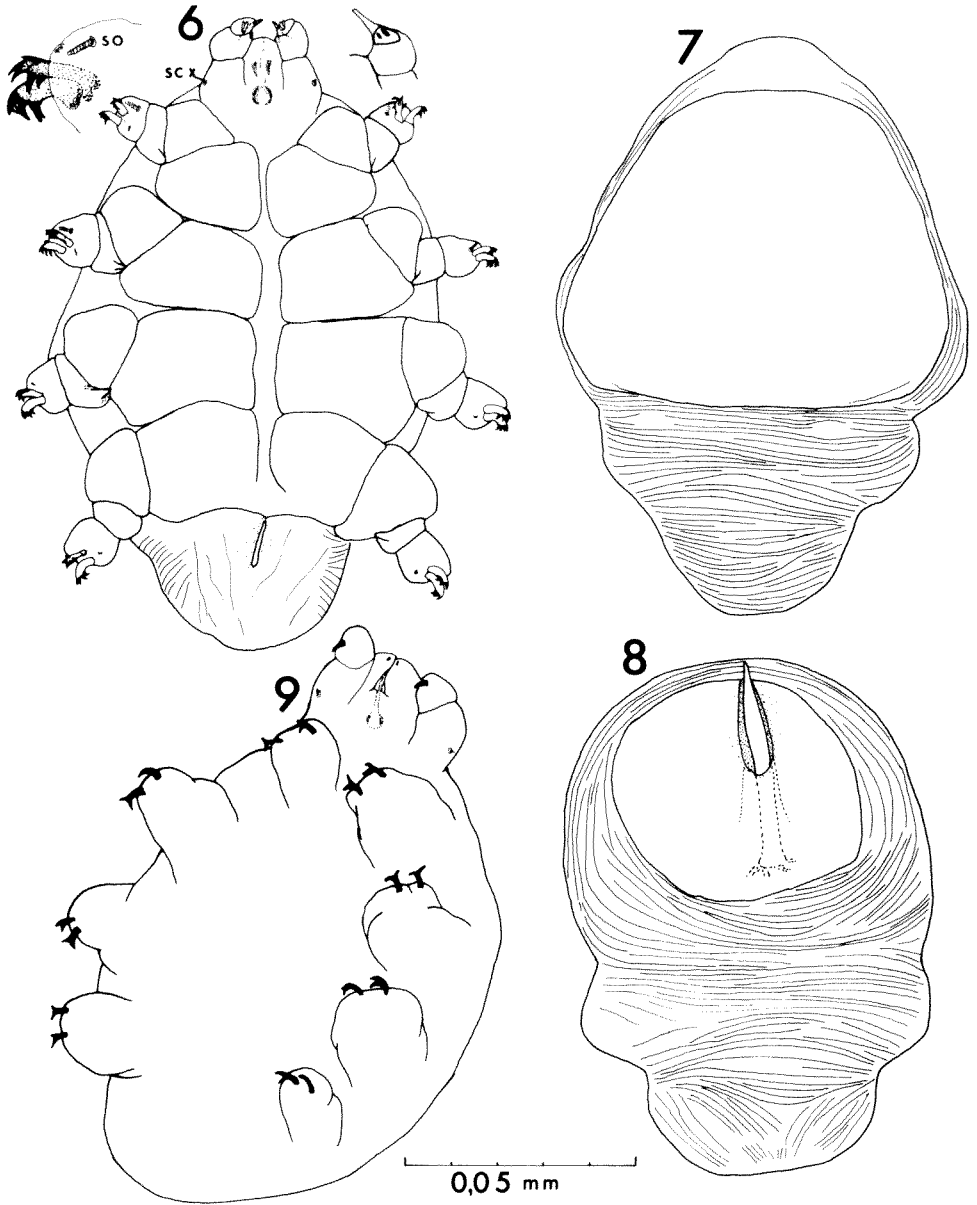
Male (Fig. 8): Total length 125 μ m, width 90 μ m in single paratype. General shape of venter as in female. Dorsum with small prodorsal shield, lacking elevation covering aedeagus (49 x 49 μ m) in allotype, falling well short of sides of propodosoma. Genital opening long, oval, near anterior border of shield. Aedeagus 24 μ m long (allotype), relatively stout, within distinct penis sheath. Striations of soft parts as figured.

Female (Figs 5, 7): Total length in 13 paratypes measured 144.5 ± 8.6 , width 92.7 ± 7.1 . Opisthosoma of holotype 31 μ m (29.7 ± 4.7) long, with broad rounded end, without distinct transverse striation. Total length/length opisthosoma 4.86 ± 0.76 . Venter (Fig. 6) as in *O. australiensis*, but legs set more ventrally, and coxal plates I touching in midline, II-IV separated by small sternal region. Coxal plates distinctly larger in transverse than in longitudinal direction (contrary to *O. australiensis*). Claws with five subequal tines. Palptibia with long dorsodistal protrusion and rather strong sclerotisation (palptibial claw). Dorsum (Fig. 7) with broad prodorsal shield, covering propodosoma except for narrow strip at sides, 84 μ m long in holotype (74.5 ± 5.0). Soft parts beside shield with longitudinal, behind shield with transverse striations.

Nymph (Fig. 9): General shape as in *O. australiensis* with gnathosoma prominent, as large as in adults. Palptarsus with only one spine. Legs stumpy, without distinct lobes; claws with stronger points.

Egg: Subspherical, 63.8 ± 3.2 μ m, large in relation to female and genital opening.

TWO NEW *OPHTHALMODEX* FROM BATS



Figs 6-9: *Ophthalmodex wilsoni* sp. nov. (6) female holotype, venter; (7) female holotype, dorsum; (8) male allotype, dorsum; (9) nymph, venter.

Etymology

The new species is dedicated to Dr Barry Wilson, Director, National Museum of Victoria, Melbourne, formerly Head of the Division of Natural Science, Western Australian Museum, Perth.

ACKNOWLEDGEMENTS

This paper results from the combined Western Australia Field Programme 1976-77 of the Field Museum of Natural History, Chicago and the Western Australian Museum, Perth. The participation of a mammal group was made possible by the generous gift of William S. and Janice Street, Ono, Washington, U.S.A., and with the aid of grant R 87-111 by Netherlands Organization for the Advancement of Pure Research (Z.W.O.). We are indebted to Dr D.J. Kitchener, Western Australian Museum, Perth, for identification of hosts, and to Dr R. Domrow, Queensland Institute of Medical Research, Brisbane, for critical review.

REFERENCES

- LUKOSCHUS, F.S. and NUTTING, W.B. (1979). Parasitic mites of Surinam. XIII. *Ophthalmodex artibei* gen. nov., spec. nov. (Prostigmata: Demodicidae) from *Artibeus lituratus* with notes on pathogenesis. *International Journal of Acarology*, 5 (4): 299-304.
- LUKOSCHUS, F.S., WOELTJES, A.G., DESCH, C.E. and NUTTING, W.B. (1980). Parasitic mites of Surinam. XXXV. Two new *Ophthalmodex* spp. (*O. carolliae*, *O. molossi* : Demodicidae) from the bats *Carollia perspicillata* and *Molossus molossus*. *International Journal of Acarology*, 6 (1): 45-50.

GUIDE TO AUTHORS

Subject Matter

Reviews and papers reporting results of research in all branches of natural science and human studies will be considered for publication. However, emphasis is placed on studies pertaining to Western Australia. Material must be original and not have been published elsewhere.

Presentation

Authors are advised to follow the layout and style in the most recent issue of the *Rec. West. Aust. Mus.* including headings, tables, illustrations and references.

The title should be concise, informative and contain key words necessary for retrieval by modern searching techniques. Names of new taxa must not be included. An abridged title (not exceeding 50 letter spaces) should be included for use as a running head.

An abstract must be given, summarizing the scope of the work and principal findings. It should normally not exceed 2% of the paper and should be suitable for reprinting in reference periodicals. Contrary to Recommendation 23 of the International Code of Zoological Nomenclature it may include names of new taxa.

Footnotes are to be avoided, except in papers dealing with historical subjects.

The International System of units should be used.

Numbers should be spelled out from one to nine in descriptive text; figures used for 10 or more. For associated groups, figures should be used consistently, e.g. 5 to 10, not five to 10.

Spelling should follow the *Concise Oxford Dictionary*.

Systematic papers must conform with the International Codes of Botanical and Zoological Nomenclature and, as far as possible, with their recommendations.

Synonymies should be given in the short form (taxon, author, date, page) and the full reference cited at the end of the paper.

Manuscripts

The original and two copies of manuscripts should be submitted to the Publications Officer, Western Australian Museum, Francis Street, Perth, Western Australia 6000. They must be in double-spaced typescript on A4 sheets. All margins should be at least 30 mm wide. Tables plus headings and legends to illustrations should be typed on separate pages. The desired positions for insertion of tables and illustrations in the text should be indicated in pencil. Tables should be numbered consecutively, have headings which make them understandable without reference to the text, and be referred to in the text.

Illustrations must be suitable for direct photographic reproduction. The original (or a good quality photographic reproduction) and two copies (the latter at desired reproduction size) of all illustrations are required with figure numbers lightly pencilled on the back. Lettering on them must be of appropriate size for reduction, if this will be necessary. Scale must be indicated, preferably on the illustration. All illustrations, whether line drawings or photographs, should be numbered in sequence and referred to as 'Fig.' or 'Figs' in the text. Each must have a brief, fully self-explanatory caption.

In papers dealing with historical subjects references may be cited as footnotes. In all other papers references must be cited in the text by author and date and all must be listed alphabetically at the end of the paper. The names of journals are abbreviated according to *World List of Scientific Periodicals*. The use of 'unpublished data' or 'personal communication' is discouraged.

Processing

Papers are reviewed by at least two referees and acceptance or rejection is then decided by an editorial committee.

Authors are sent two sets of galley proofs (one to be retained) and one set of page proofs which must be returned promptly to the Publications Officer after correction.

Authors will receive fifty free offprints of their paper. Additional offprints can be purchased and should be ordered in advance through the Publications Officer.

CONTENTS

	Page
STORR, G.M. The genus <i>Ramphotyphlops</i> (Serpentes: Typhlopidae) in Western Australia	235
ABBOTT, IAN Two species of lumbricid earthworm newly recorded from Western Australia	273
ALLEN, GERALD, R. A revision of the rainbowfish genus <i>Chilatherina</i> (Melanotaeniidae)	279
ALLEN, GERALD, R. A new species of <i>Glossolepis</i> (Pisces: Melanotaeniidae) from fresh waters of Papua New Guinea	301
WOELTJES, A.G.W. & LUKOSCHUS, F.S. Parasites of Western Australia. XIV. Two new species of <i>Ophthalmodex</i> Lukoschus and Nutting (Acarina: Prostigmata: Demodicidae) from the eyes of bats	307